

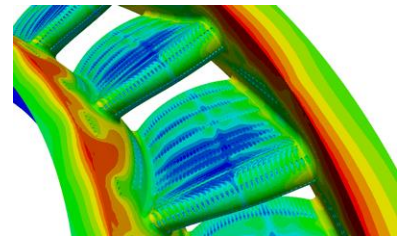
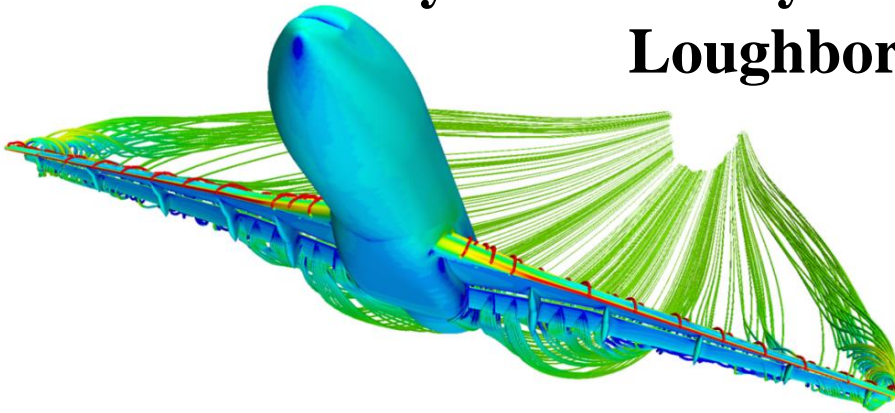


**ROYAL  
AERONAUTICAL  
SOCIETY**

**Loughborough Branch**

# **Computational Fluid Dynamics (CFD) and its Importance to Aircraft Design**

**by Professor Gary J Page,  
Deputy Director,  
Rolls-Royce University Technology Centre  
Loughborough University**



This lecture will provide a layman's approach to the importance of Computational Fluid Dynamics in aircraft design. As such it will be aimed at individuals having a general interest in aviation rather than the specialist.

**7.30 PM Tuesday 22nd January 2019**

**Room U020 (Brockington Building)**

**Loughborough University**

*Ask at University entrance off Epinal Way for directions to  
the lecture venue*

**For the very latest updates consult our website:**

**[www.loughborough-raes.org.uk](http://www.loughborough-raes.org.uk)**

**RAeS Members/Branch Friends/Students - Free of Charge**

**Members of the Public - Donation Appreciated**