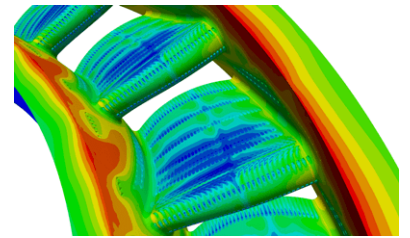
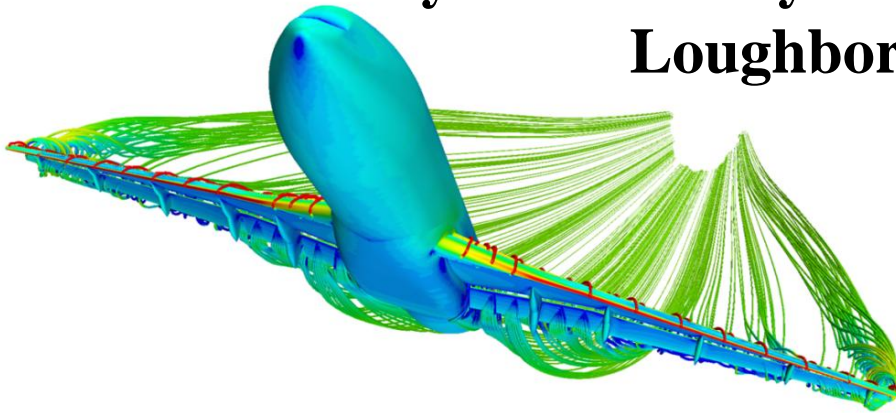




**ROYAL
AERONAUTICAL
SOCIETY**
LOUGHBOROUGH BRANCH

Computational Fluid Dynamics (CFD) and its Importance to Aircraft Design

**by Professor Gary J Page,
Deputy Director,
Rolls-Royce University Technology Centre
Loughborough University**



This lecture will provide a layman's approach to the importance of Computational Fluid Dynamics in aircraft design. As such it will be aimed at individuals having a general interest in aviation rather than the specialist.

**7.30 PM Tuesday 22nd January 2019
Room U020 (Brockington Building)
Loughborough University**

*Ask at University entrance off Epinal Way for directions to
the lecture venue*

For the very latest updates consult our website:

www.loughborough-raes.org.uk

**RAeS Members/Branch Friends/Students - Free of Charge
Members of the Public - Donation Appreciated**